

## Highlights:

Moxifloxacin (PO and IV) will require approval by the Antibiotic Approval Service beginning **April 22<sup>nd</sup>**

[Guidelines for Initial Antibiotic Regimens for Community-Acquired Pneumonia](#)

[SMH Clinical Practice Guideline: COPD Management](#)

[Restricted Antimicrobial Policy](#)

Use of fluoroquinolones, including moxifloxacin, is a significant risk factor for *C. difficile* infection, especially with the more virulent BI/NAP1/027 strain.<sup>1,2</sup> As part of recent efforts to curb *C. difficile* rates across Rochester, moxifloxacin use has been a focus of antimicrobial stewardship. Recent changes to reduce unnecessary quinolone use include:

- October 2013: revision of URM Clinical Practice [Guidelines for Initial Antibiotic Regimens for Community-Acquired Pneumonia](#) to recommend the use of ceftriaxone plus doxycycline as first-line therapy, reserving moxifloxacin for patients with severe penicillin allergy or requiring ICU admission.
- February 2015: the [SMH Clinical Practice Guideline for COPD Management](#) was published, which recommended reserving moxifloxacin only for cases of severe beta-lactam allergy.

Since the first quarter of 2012, moxifloxacin use has decreased by almost 50% at Strong Memorial and Highland Hospitals. (Fluoroquinolone usage data for each institution is reported in days of therapy per 1000 patient-days on page two of this report). While this trend is impressive, further reductions are achievable.

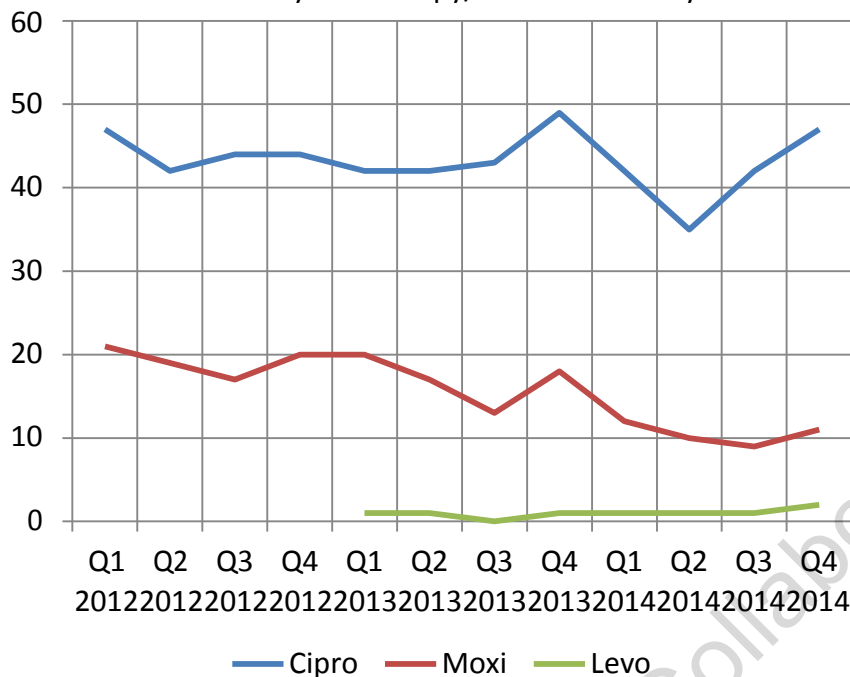
Beginning **Wednesday, April 22<sup>nd</sup>**, moxifloxacin will require ID approval for inpatient use at Strong and Highland.

In accordance with the Restricted Antimicrobial policy, first doses will be dispensed by pharmacy, however subsequent doses will not be sent until approval is obtained.

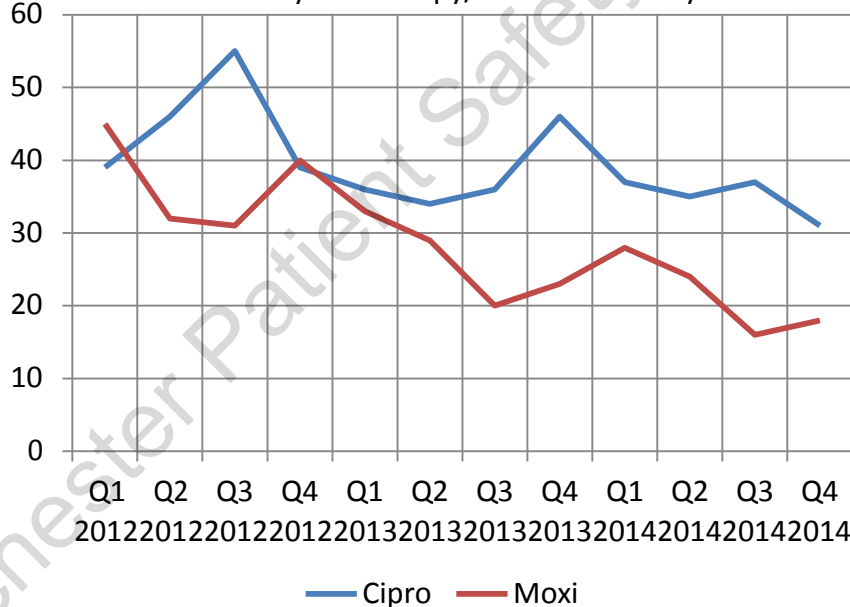
### Obtaining Approval

- SMH (ADULT): contact the ID Antibiotic Approval Pager (16-7609)
- SMH (PEDS): contact the Pediatric Infectious Disease 1st Call (16-7115)
- HH: contact the HH Antibiotic Approval On-Call pager (Refer to on-call schedule in web paging or dial "0" for operator assistance)

Strong Memorial Hospital  
Days of Therapy/1000 Patient-Days



Highland Hospital  
Days of Therapy/1000 Patient-Days



References:

- 1) Slimings C, et al. Antibiotics and hospital-acquired *Clostridium difficile* infection: update of systematic review and meta-analysis. *J Antimicrob Chemother.* 2014;69(4):881 – 91.
- 2) Vardakas, KZ et al. Risk factors for development of *Clostridium difficile* infection due to B1/NAP1/027 strain: a meta-analysis. *Int J Infect Dis.* 2012;16:e768-e773.



Contact: Lauren Gashlin PharmD  
 lauren\_gashlin@urmc.rochester.edu  
 Drug Information Center  
 (585) 275 - 3718